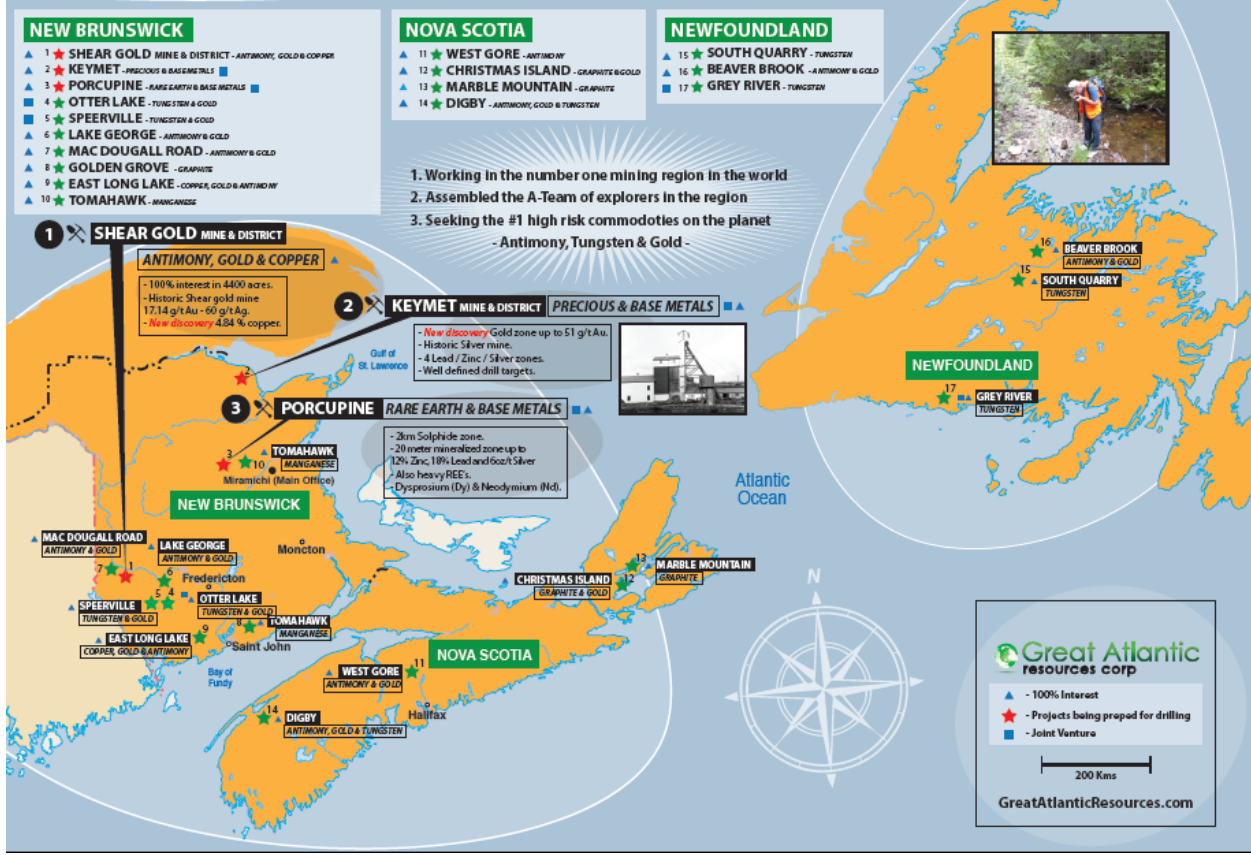


**FOCUSED ON EXPLORING ATLANTIC CANADA**  
FINDING AND ADVANCING MINERAL ASSETS UNDER A PROJECT GENERATION MODEL



- NEW BRUNSWICK**
- ▲ 1 ★ SHEAR GOLD MINE & DISTRICT - ANTIMONY, GOLD & COPPER
  - ▲ 2 ★ KEYMET - PRECIOUS & BASE METALS
  - ▲ 3 ★ PORCUPINE - RARE EARTH & BASE METALS
  - ▲ 4 ★ OTTER LAKE - TUNGSTEN & GOLD
  - ▲ 5 ★ SPEERVILLE - TUNGSTEN & GOLD
  - ▲ 6 ★ LAKE GEORGE - ANTIMONY & GOLD
  - ▲ 7 ★ MAC DOUGALL ROAD - ANTIMONY & GOLD
  - ▲ 8 ★ GOLDEN GROVE - GRANITE
  - ▲ 9 ★ EAST LONG LAKE - COPPER, GOLD & ANTIMONY
  - ▲ 10 ★ TOMAHAWK - MANGANESE

- NOVA SCOTIA**
- ▲ 11 ★ WEST GORE - ANTIMONY
  - ▲ 12 ★ CHRISTMAS ISLAND - GRANITE & GOLD
  - ▲ 13 ★ MARBLE MOUNTAIN - GRANITE
  - ▲ 14 ★ DIGBY - ANTIMONY, GOLD & TUNGSTEN

- NEWFOUNDLAND**
- ▲ 15 ★ SOUTH QUARRY - TUNGSTEN
  - ▲ 16 ★ BEAVER BROOK - ANTIMONY & GOLD
  - ▲ 17 ★ GREY RIVER - TUNGSTEN

1. Working in the number one mining region in the world
2. Assembled the A-Team of explorers in the region
3. Seeking the #1 high risk commodities on the planet - Antimony, Tungsten & Gold -

**1 X SHEAR GOLD MINE & DISTRICT**  
ANTIMONY, GOLD & COPPER

- 100% interest in 4400 acres.
- Historic Shear gold mine 17.14 g/t Au - 60 g/t Ag.
- New discovery 4.84 % copper.

**2 X KEYMET MINE & DISTRICT** PRECIOUS & BASE METALS

- New discovery Gold zone up to 51 g/t Au.
- Historic Silver mine.
- 4 Lead / Zinc / Silver zones.
- Well defined drill targets.

**3 X PORCUPINE** RARE EARTH & BASE METALS

- 2km Solfphide zone.
- 20 meter mineralized zone up to 1.2% Zinc, 1.9% Lead and 6oz/t Silver
- Also heavy REE's.
- Dysprosium (Dy) & Neodymium (Nd).

**Great Atlantic**  
resources corp

- ▲ - 100% Interest
- ★ - Projects being prepared for drilling
- - Joint Venture

200 Kms

GreatAtlanticResources.com